

# Quadshore™

The world's lightest, heavy-duty propping system

Developed as part of Coates' multi-year R&D collaboration with Monash University, Quadshore is the world-leading lightweight heavy-duty propping solution for temporary construction works.

The award-winning propping system is tested and certified to relevant Australian standards and consists of the heavy-duty Quadshore 150 and the medium-duty Quadshore 50. Both Q150 and Q50 are compatible with other propping systems, such as Coates' Universal Prop System.



Excellence Awards



Innovation of the Year 2023

# Quadshore 50

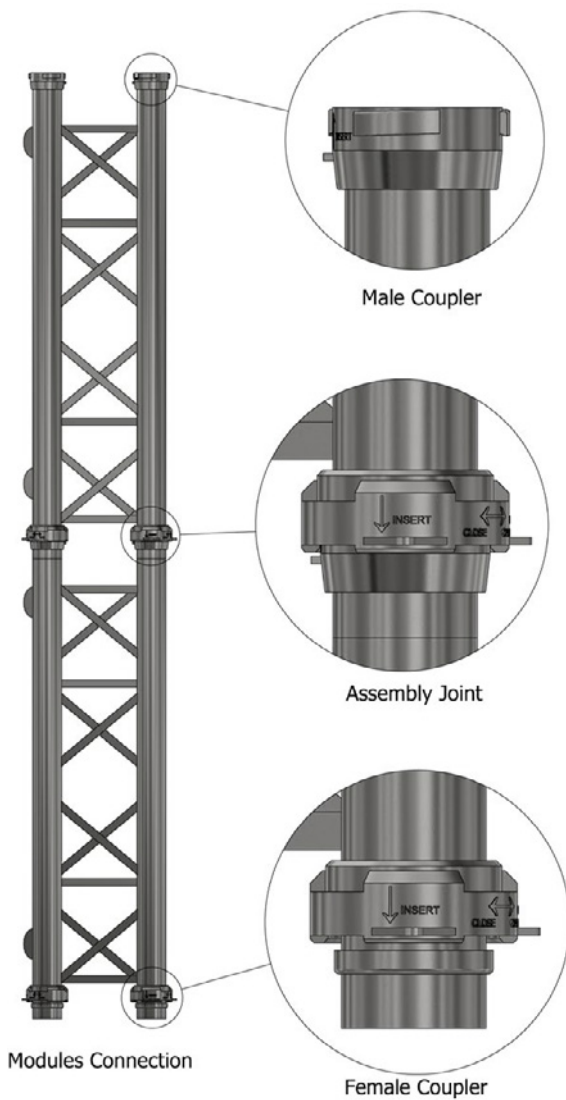
The modular Quadshore 50 provides medium load-bearing support in a variety of configurations, including single leg propping assemblies, raking struts and high-rise tower systems.

The working load limit (WLL) of a 3m assembly is 608kN (62t) – 1.4 x higher than conventional systems.

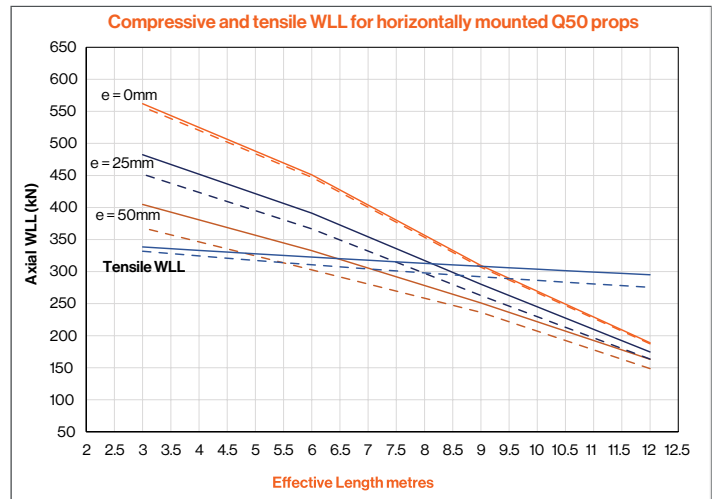
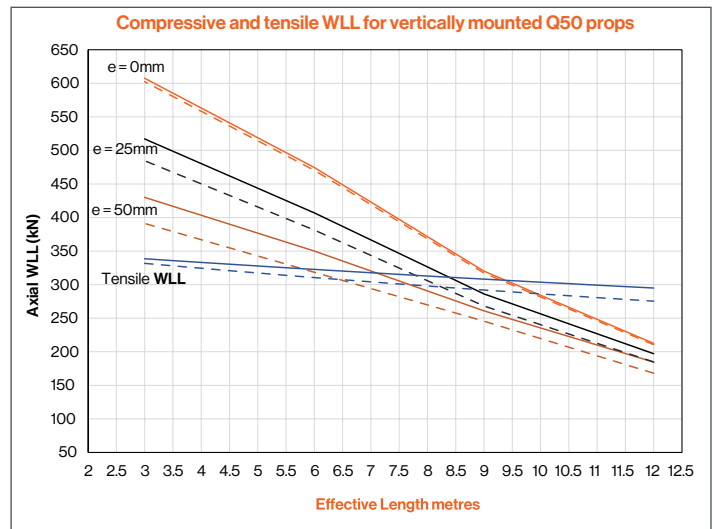
Patented Twistlock Boltless Connections means the assembly and disassembly time of Quadshore 50 is 40% quicker than conventional systems.

Quadshore 50 standard module weights	
Length	Weight (kg)
250mm	8.9
1250mm	23.0
1500mm	27.0
2000mm	35.0

## Patented Twistlock Boltless Connections



## Quadshore 50 Load charts

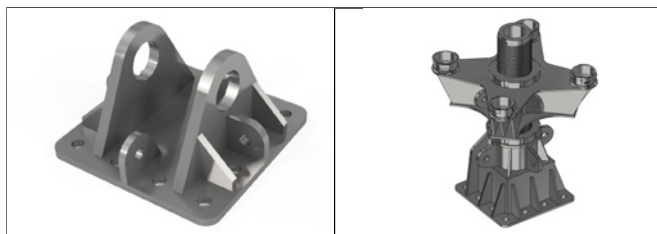
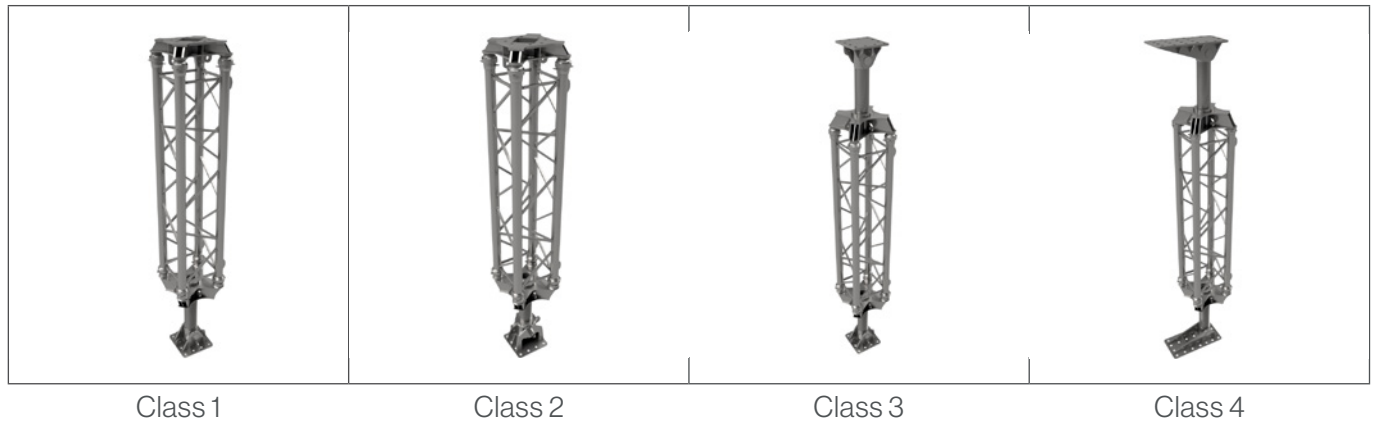


For more information, see [Quadshore 50 Technical Data](#).

## Quadshore 50 Components

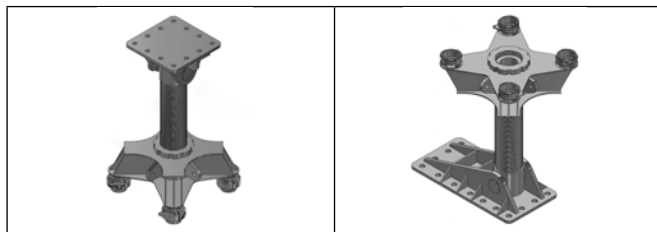
Using Quadshore 50's range of components and accessories, 4 single leg assemblies (Class 1 – 4) can be formed for temporary works such as bridge propping, slab propping, back propping, facade retention, falsework, formwork or raking and needling applications.

### Single leg assemblies



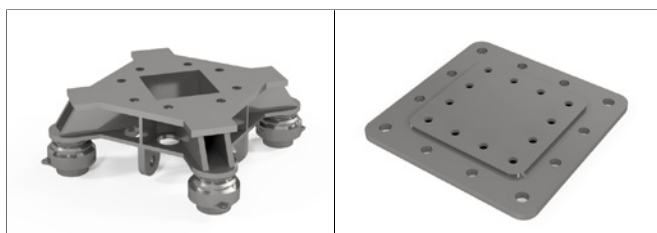
Raking Base Jack

Base Jack with Mini-Stool



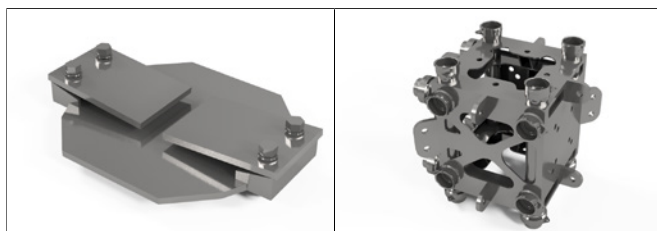
Top Jack

Multi-Angle Jack



Flat Head

Transfer Fixing Plate



Needle Beam Fixing Clamp

Universal Connector

Quadshore 50 components		Weight (kg)
<b>Raking Base Jack</b>	Cross Head	16.8
	Thrust Nut	3.0
	Raking Screw	17.0
	Raking Base	11.9
	Raking Pin	2.9
<b>Base Jack with Mini-Stool</b>	Cross Head	16.8
	Thrust Nut	3.0
	Simple Screw	16.7
	Mini-Stool	14.8
<b>Top Jack</b>	Top Cross Head	19.0
	Thrust Nut	3.0
	Raking Screw	17.0
	Raking Base	11.9
	Raking Pin	2.9
<b>Multi-Angle Jack</b>	Top Cross Head*	19.0
	Thrust Nut	3.0
	Raking Screw	17.0
	Multi-Angle Plate	20.0
	Raking Pin	2.9
<b>Flat Head</b>		21.0
<b>Transfer Fixing Plate</b>		19.0
<b>Needle Beam Fixing Clamp</b>		20.0
<b>Universal Connector</b>		59.0

\* Replace Top Cross Head with Cross Head when the Multi-Angle Jack is used at the base.

# Quadshore 150

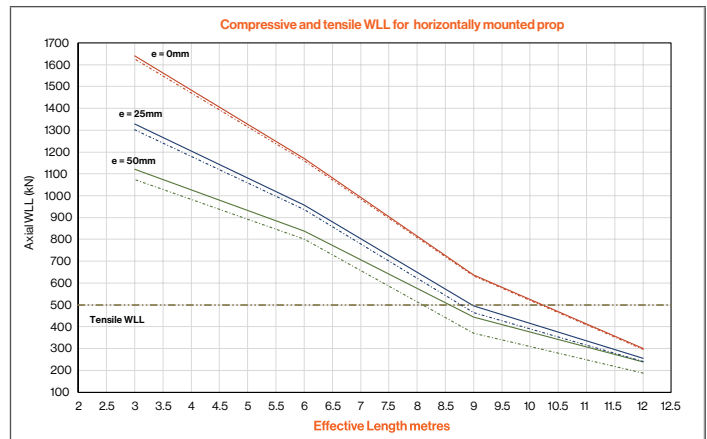
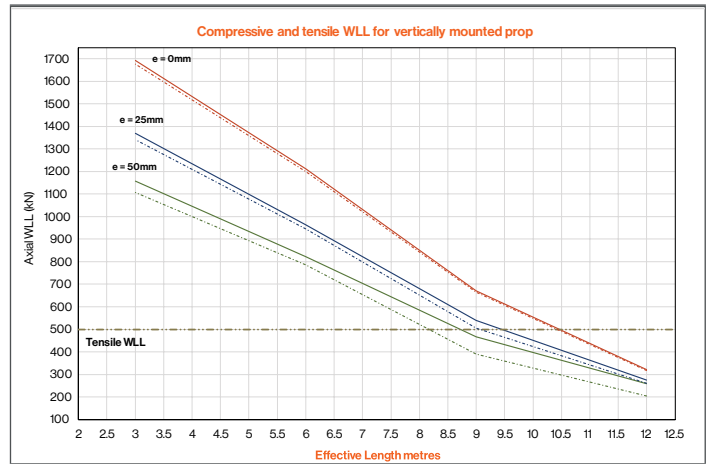
Quadshore 150 is the lightest, heavy-duty propping solution available in the market. The modular system provides extra high load-bearing support in a variety of configurations, including single leg propping assemblies, raking struts and high-rise tower systems.

The working load limit (WLL) of a 3m assembly is 1692kN (172t) – 1.7 x higher than conventional systems.

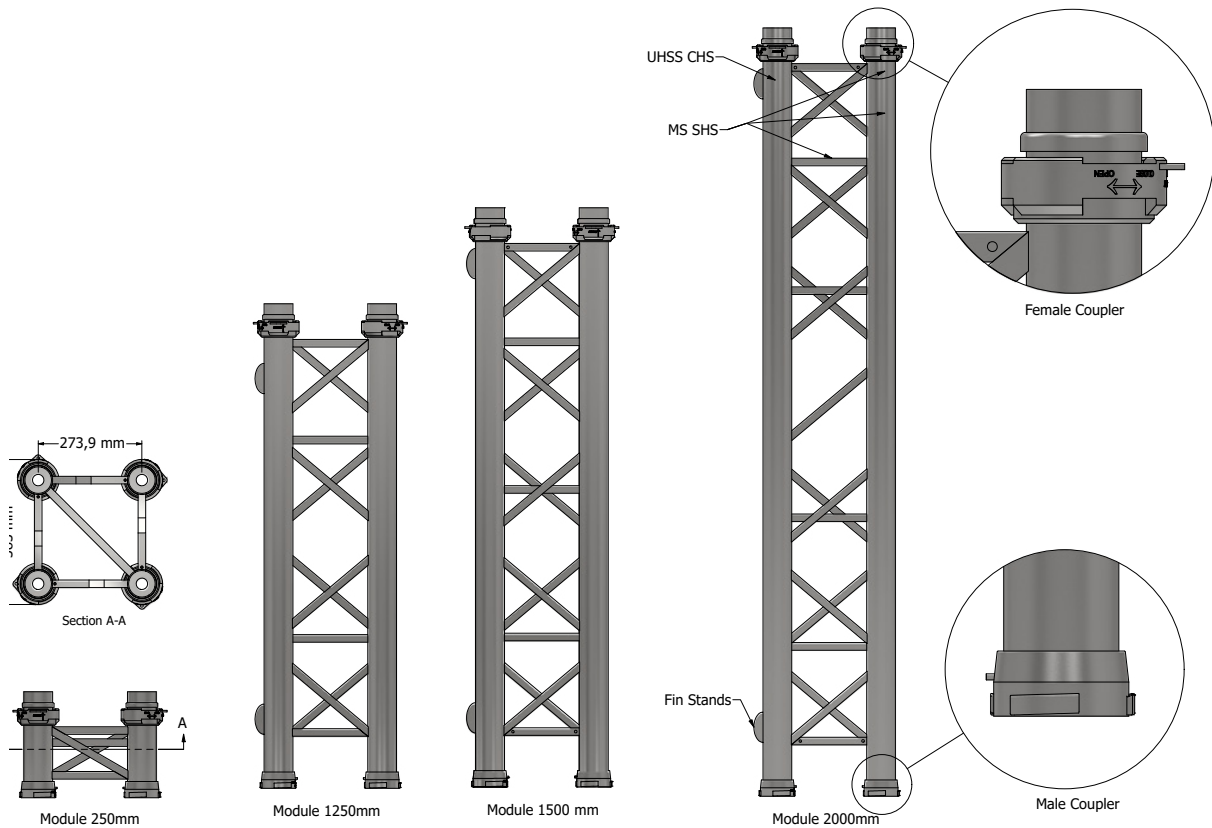
Patented Twistlock Boltless Connections means the assembly and disassembly time of Quadshore 150 is 60% quicker than conventional systems.

Quadshore 150 standard module weights	
Length	Weight (kg)
250mm	14.0
1250mm	40.0
1500mm	46.0
2000mm	60.0

## Quadshore 150 Load charts



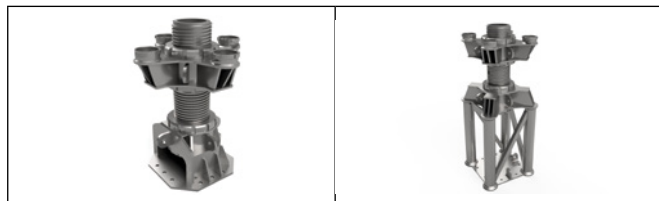
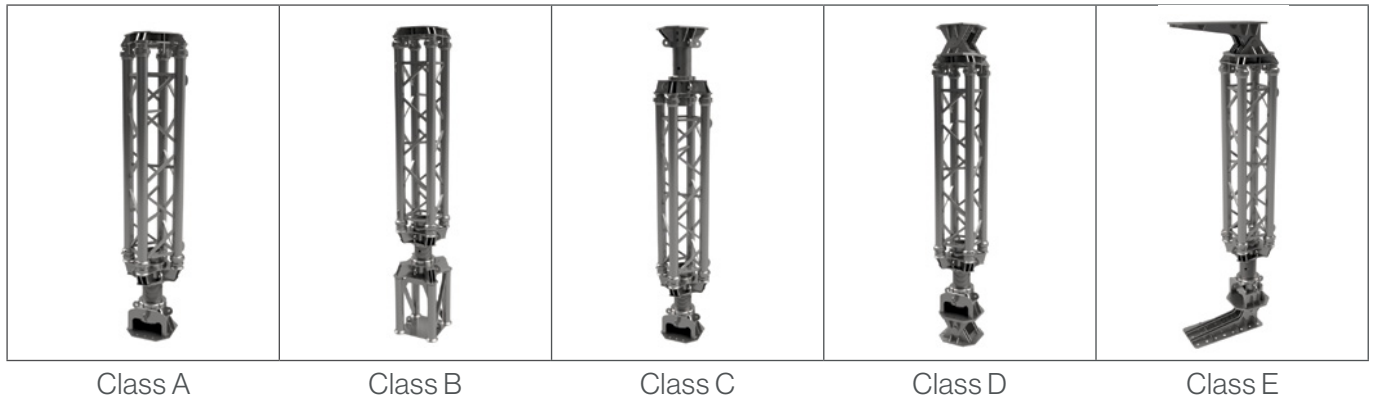
For more information, see [Quadshore 150 Technical Data](#)



# Quadshore 150 Components

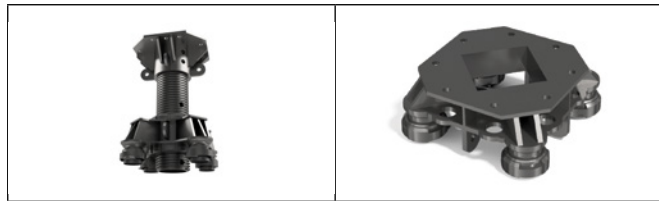
Using Quadshore 150's range of components and accessories, 5 single leg assemblies (Class A - E) can be formed for temporary works such as bridge propping, slab propping, back propping, facade retention, falsework, formwork or raking and needling applications.

## Single leg assemblies



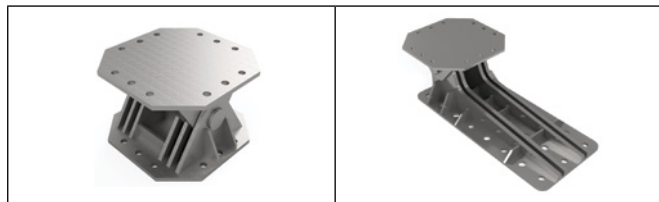
Base Jack

Lifting jack



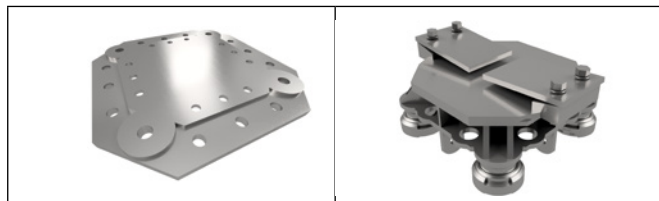
Top Jack

Flat head



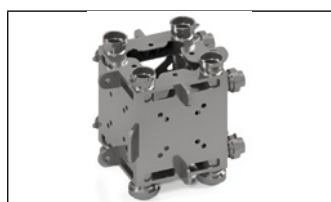
Raking Bracket

Multi-Angle Bracket



Transfer Fixing Plate

Needle Beam Fixing Clamp



Quadshore 150 components		Weight (kg)
<b>Base Jack</b>	Cross Head	24.5
	Thrust Nut	7.3
	Screw	32.7
	Mini-Stool	26.0
<b>Lifting Jack</b>	Cross Head	24.5
	Nut	7.3
	Screw	32.7
	Lifting Stool	60.0
<b>Top Jack</b>	Top Cross Head	28.0
	Nut	7.3
	Screw	32.7
	Jack Base	17.0
<b>Flat Head</b>		28.0
<b>Raking Bracket</b>		53.0
<b>Multi-Angle Bracket</b>		71.5
<b>Transfer Fixing Plate</b>		30.0
<b>Needle Beam Fixing Clamp</b>		19.0
<b>Universal Connector</b>		68.0

# Coates

Equipped for anything



## Contact us

For more information, contact  
Coates Engineering Solutions

 **(02) 8796 5000**

 [engineeringsolutions@coates.com.au](mailto:engineeringsolutions@coates.com.au)

 [coates.com.au/engineering-solutions](http://coates.com.au/engineering-solutions)

© The photographs/illustrations in this brochure are intended to illustrate possible applications of the product and as such must not be used as assembly instructions.

In line with Coates' commitment to continuous product development and improvement, the information contained in this document may be changed without notice. Please confirm with Coates for latest update.